

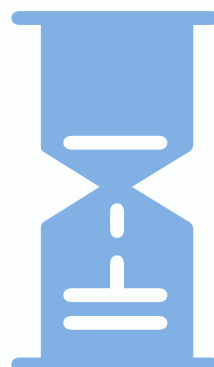
How we help our community



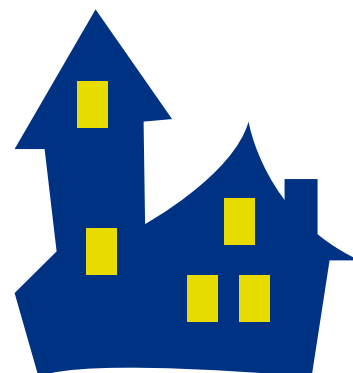
**1,145 patients
were referred
to us**



**The inpatient
unit has 30
beds across
2 wards**



**Average
length of stay
for inpatients
is 19 days**



**Community
nurses made
3,038 visits to
497 patients**



34%

**34% of
inpatients
were
discharged**

**The day
services team
welcomed 157
new patients**



**The
counsellors
supported
157 patients
and family
members**



**Patients and
families
enjoyed 657
therapy and
hairdressing
sessions**



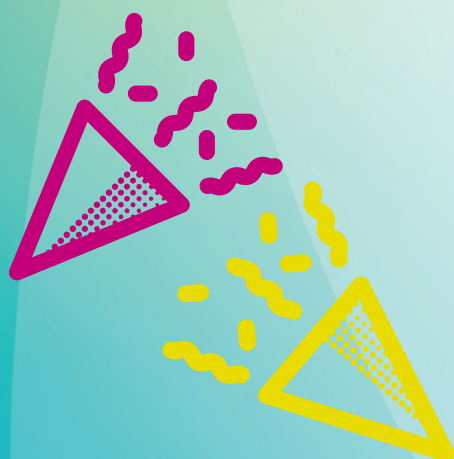
680 people
volunteered
their time
to support the
Hospice



Staff published
research
articles about
palliative care



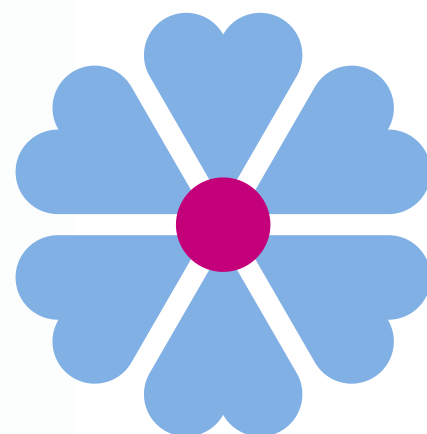
We held an
Open Day so
people could
learn about
our services



Fundraising
activities
took place
throughout
the year



The Hospice
joined a
mentoring
programme,
working with
nurses in Uganda



The Hospice
launched
Tribute Funds,
a special
fundraising
initiative

Get in touch



If you would like to find out more about our services, fundraising, volunteering or our education and research programmes please visit our website:

www.stcolumbashospice.org.uk

St Columba's Hospice
15 Boswall Road
Edinburgh
EH5 3RW

0131 551 1381

fund@stcolumbashospice.org.uk



facebook.com/stcolumbas



twitter.com/stcolumbas